

# Hydraulic Equipment

## HMT1 Series Monoblock Valve



# Table of Contents

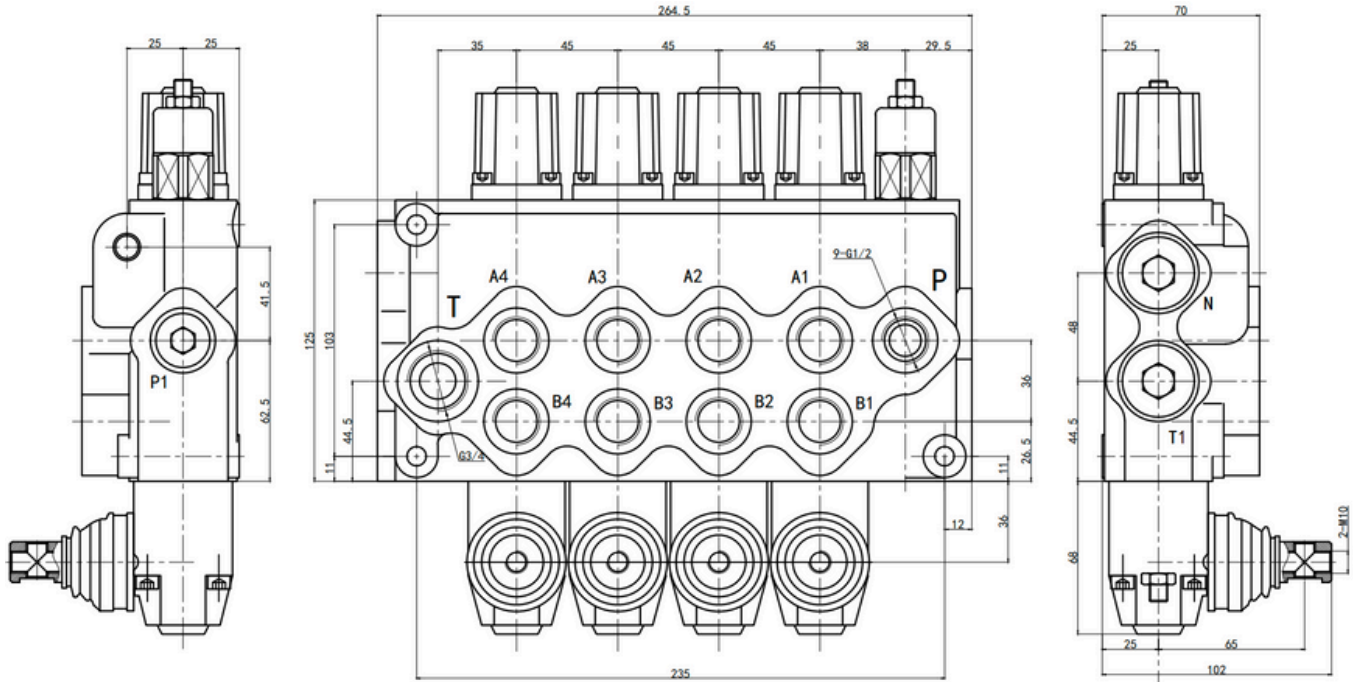
<b>General Information</b>	<b>3</b>
<b>HM11 Specification</b>	<b>4</b>
<b>Diagrams</b>	<b>5</b>
<b>Nomenclature</b>	<b>6</b>
<b>Inlet &amp; Spool</b>	<b>7</b>
<b>"A" Side Positioners</b>	<b>8</b>
<b>"B" Side Controllers</b>	<b>9</b>
<b>Outlet Options</b>	<b>10</b>

# General Information

Series	Model	Nominal Flow L/min	Max Pressure	No. of Sections	Thread
HM Monoblock	HM2	45	315	1	G3/8
	HM3	45	315	Up to 8	G3/8
	HM7	70	315	Up to 6	G1/2
	HM10	120	315	1	G3/4
	HM11	160	315	Up to 4	G3/4
HS Sectional	HS2	45	315	Up to 12	G3/8
	HS4	80	315	Up to 12	G1/2
	HS8	160	315	Up to 12	G3/4
	HS9	240	315	Up to 12	G1
	HS10	400	315	Up to 12	G5/4
HE Solenoid	SE04	60	315	Up to 12	G3/8

Controls	HM2	HM3	HM7	HM10	HM11	HS2	HS4	HS8	HS9	HS10
Mechanical	✓	✓	✓	✓	✓	✓	✓	✓	✓	✓
Hydraulic		✓	✓	✓	✓	✓	✓	✓	✓	✓
Pneumatic	✓	✓	✓	✓	✓	✓	✓	✓	✓	✓
Electric		✓					✓			
Electro-Hydraulic		✓	✓							
Electro-Pneumatic		✓	✓	✓	✓	✓	✓	✓	✓	✓
Micro-Switch		✓					✓	✓		

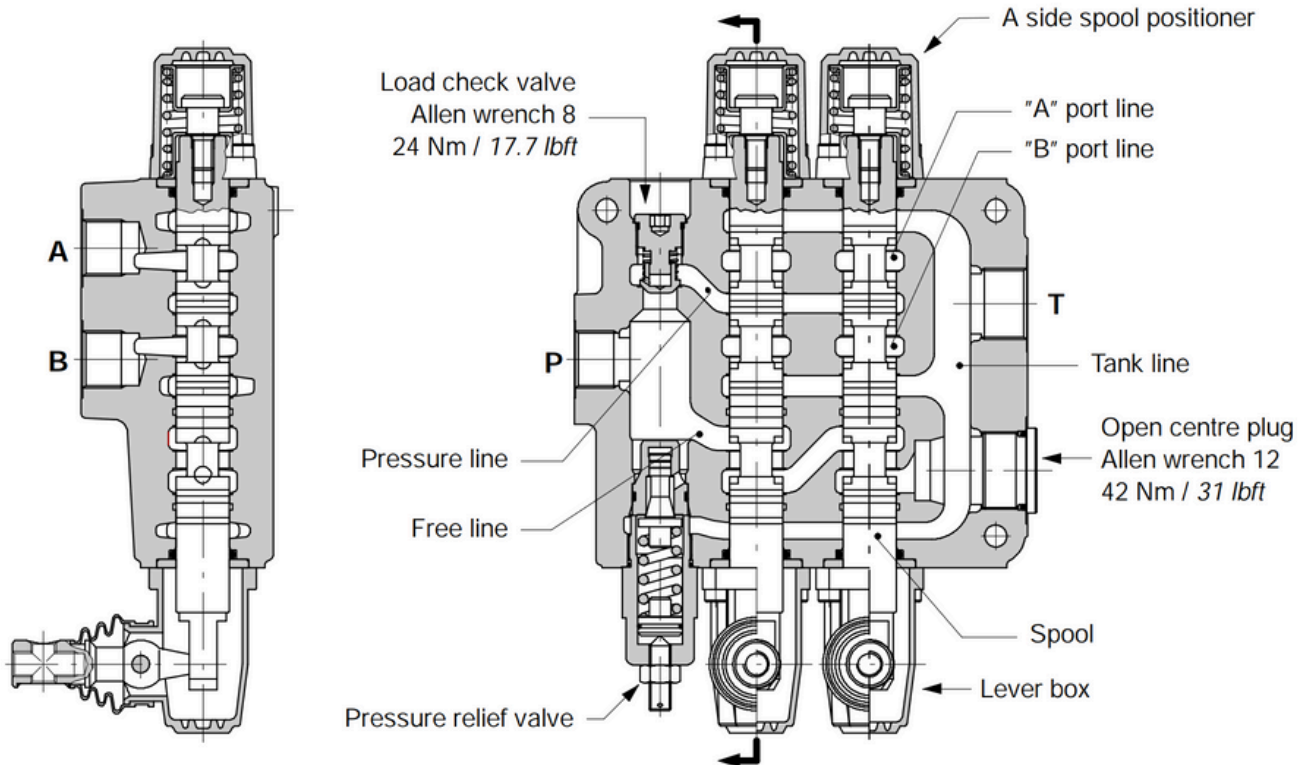
# HM11 Specification



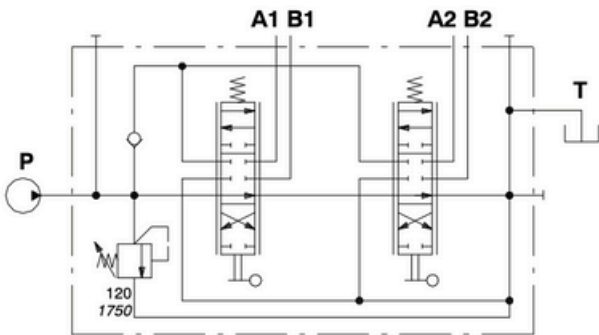
<b>Nominal Flow Rate</b>	160L/min	
<b>Opening Pressure (Max)</b>	250Bar	
<b>Back Pressure (Max)</b>	25Bar	
<b>Fluid Temperature Range</b>	With NBR Seals	-20°C to 80°C
	With Viton Seals	-20°C to 100°C
	Operating Range	From 15 to 75mm <sup>2</sup> /s
<b>Viscosity</b>	Min	12mm <sup>2</sup> /s
	Max	400mm <sup>2</sup> /s
<b>Ambient Temperature Range</b>	-40°C to 60°C	

Type	X (mm)	Y (mm)	Weight (kg)	Type	X (mm)	Y (mm)	Weight (kg)
HM7/1	130	100	6.1	HM7/4	264.5	235	14.2
HM7/2	174.5	145	8.8	HM7/5	309.5	280	16.7
HM7/3	219.5	190	11.4	HM7/6	354.5	325	19.4

# HM11 Diagrams

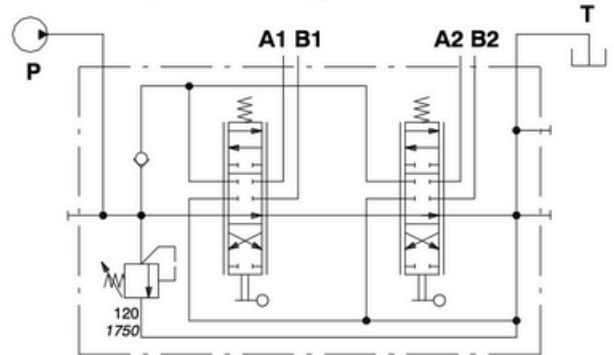


**Standard configuration**



**Example**  
**HM11/2-P(YG3-120)/18L/18L/AET**

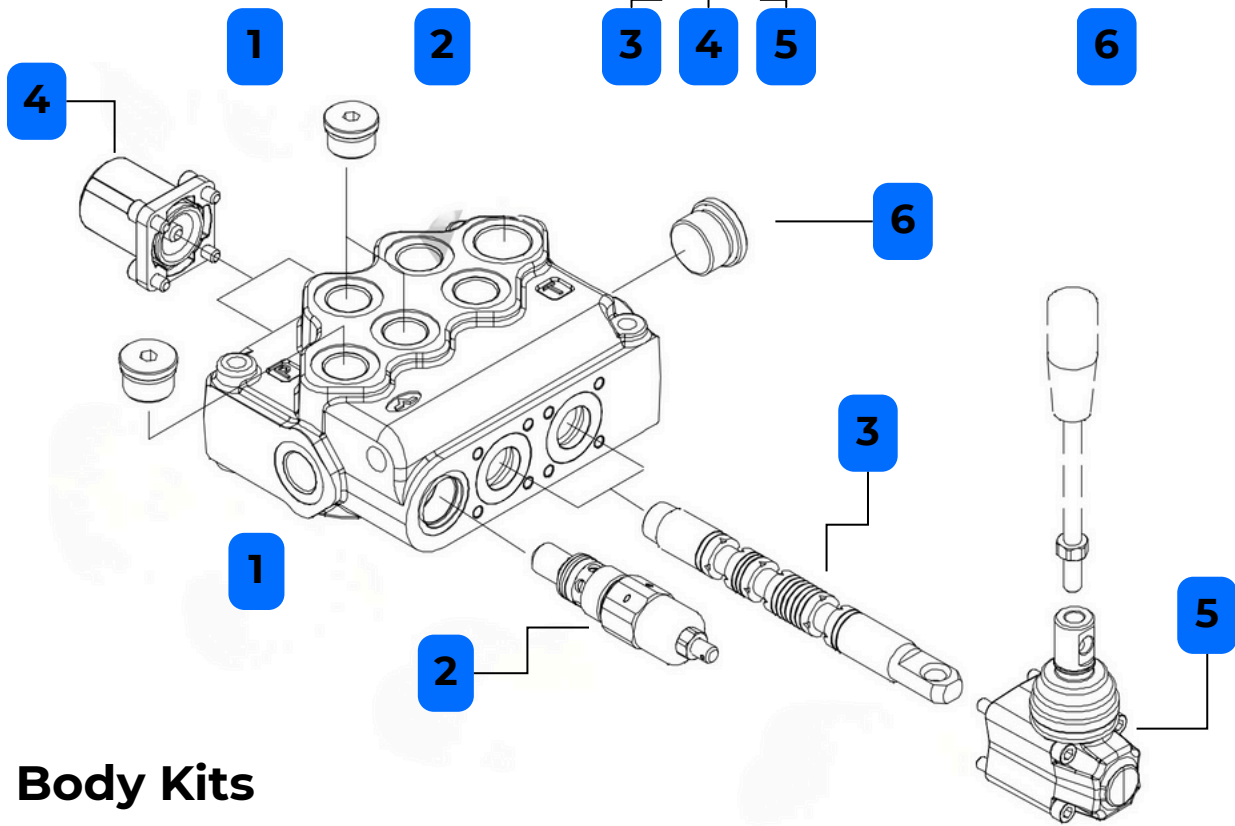
**Configuration with upper inlet and outlet**



**Example**  
**HM11/2-P(YG3-120)/18L/18L/AET-PSA**

# HM11 Nomenclature

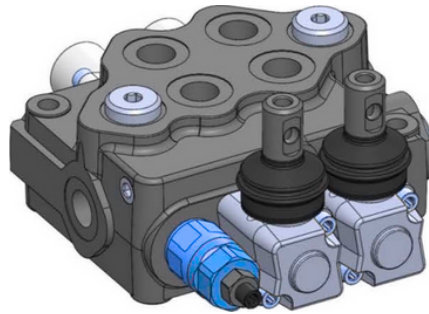
HM11 / 2-P / (YG3-160) / 1 8 L / 1 8 IM / AET



## 1 Body Kits

Model	Desc
HM11/1-P	Parallel - 1 Section
HM11/2-P	Parallel - 2 Section
HM11/3-P	Parallel - 3 Section
HM11/4-P	Parallel - 4 Section

## 2 Inlet Relief Valve



Type	Description
YG2	Range 40 To 80 Bar, Preset To 80 Bar
YG3	Range 63 To 200 Bar, Preset To 120 Bar
YG4	Range 160 To 315 Bar, Preset To 200 Bar
SV	Relief Valve Blanking Port


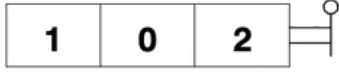

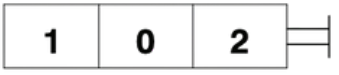




## 3 Spool Options

Type	Desc
1	Double acting, 3 positions, with A and B closed in neutral position
2	Double acting, 3 positions, with A and B open to tank in neutral position
3	Single acting on A, 3 positions, B plugged requires G3/4 plug
4	Single acting on B, 3 positions, A plugged requires G3/4 plug
6	Double acting, 3 positions, with A open to Tank in neutral position.
7	Single acting on A open to Tank in neutral position, 3 positions, B plugged.
9	Double acting, 3 positions, with PT A B close in neutral position. (Closed centre)
5	Double acting, 4 positions, floating circuit in 4th position with spool in
5VR	Double acting, 4 positions, floating circuit in 4th position with spool out, with check valve

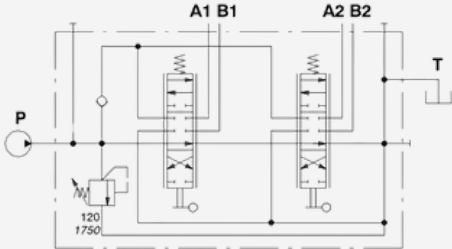
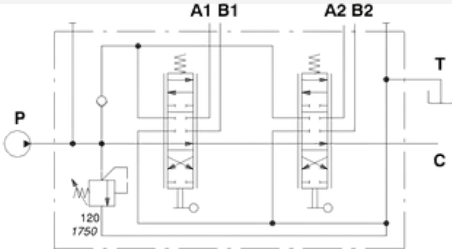
## 4 "A" Side Positioners

Type	Description	Diagram
8	With spring return in neutral position	
8D	With spring return in neutral position and pin with M6 female thread for dual control	
8D2	With spring return in neutral position and pin with M8 male thread for dual control	
19	2 positions, with spring return in neutral position from position 1	
20	2 positions, with spring return in neutral position from position 2	
9	With detent in position 1 and spring return in neutral position	
10	With detent in position 2 and spring return in neutral position	
11	Detent in positions neutral, 1 and 2	
12	Detent in positions 1 and 2	
15	2 positions, detent in positions 1 and neutral	
16	2 positions, detent in positions 2 and neutral	
9B	With detent in position 1 and spring return in neutral position	
IOB	With detent in position 2 and spring return in neutral position	
IIB	Detent in positions 1 and 2 and spring return in neutral position	
8MS3	With spring return in neutral position, microswitches on position 1 & 2	<b>Available on Request</b>
8P	ON/OFF pneumatic kit	<b>Available on Request</b>
8EP3	ON/OFF 12 VDC electro--pneumatic kit	<b>Available on Request</b>
8EP35	ON/ OFF 24 VDC electro--pneumatic kit	<b>Available on Request</b>
8ED3	ON/OFF 12 VDC electro--hydraulic kit	<b>Available on Request</b>
8ED35	ON/OFF 24 VDC electro--hydraulic kit	<b>Available on Request</b>
13B	4th Position Float (req. 5 spool)	<b>Available on Request</b>

# 5 "B" Side Controllers

Type	Desc	
L	Standard lever box	
R	Standard lever box with rotated 180 degree	
SL	Without any cover	
SLP	Without lever, with dust proof plate	
LR	With rotary control kit	
TQ	Cable connection	
LCB	Joystick control kit	
		

# 6 Outlet Options

Type	Description	Circuit Diagram
AET	Open centre plug	
AEK	Carry-Over Sleeve	
AE	Closed centre plug	